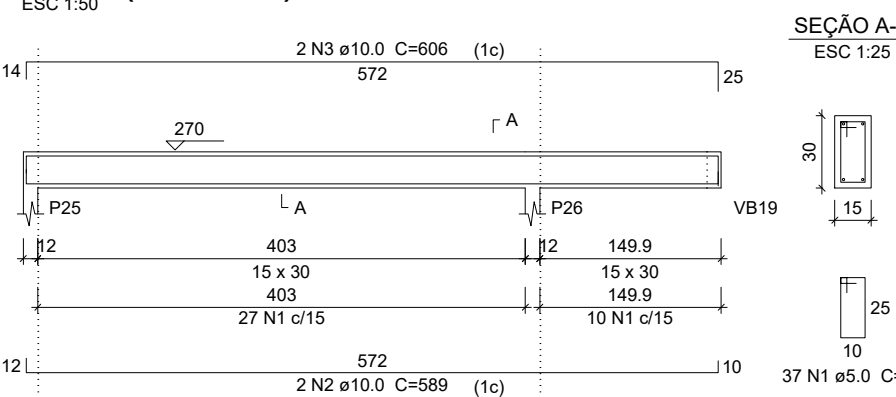
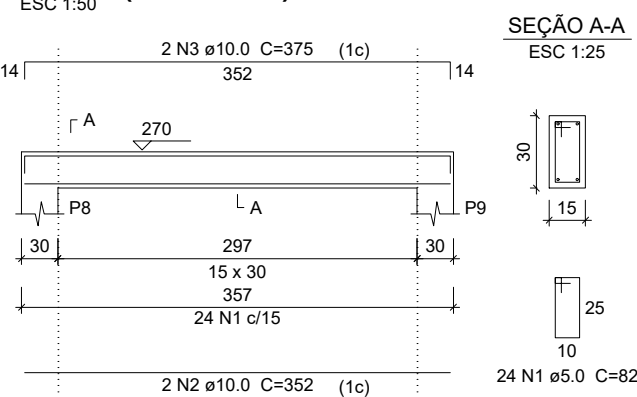


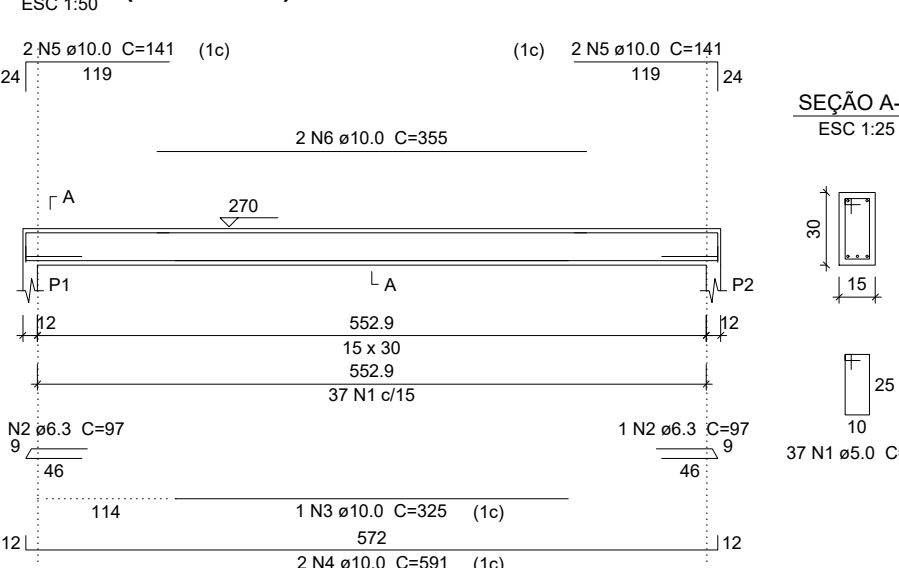
VB5 (15 x 30)



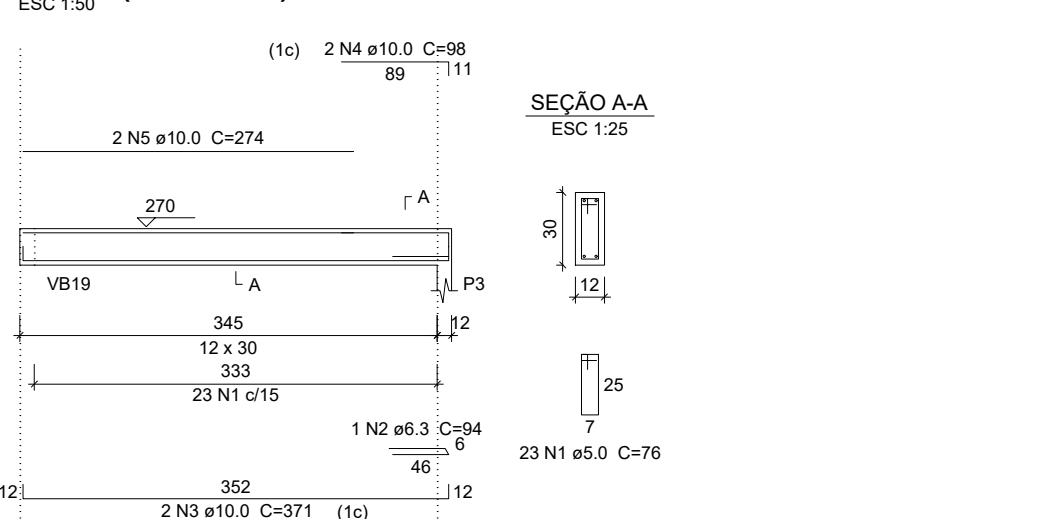
VB6 (15 x 30)



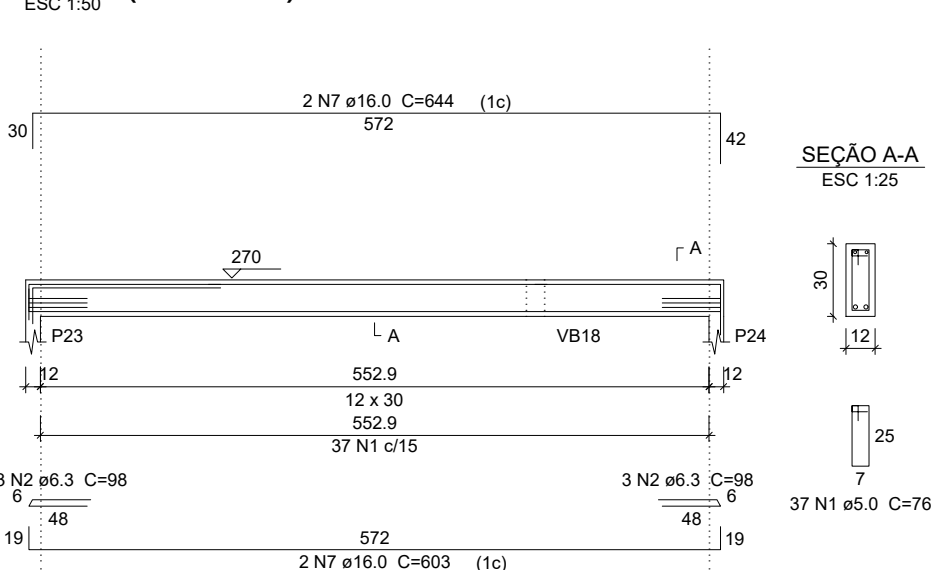
VB1 (15 x 30)



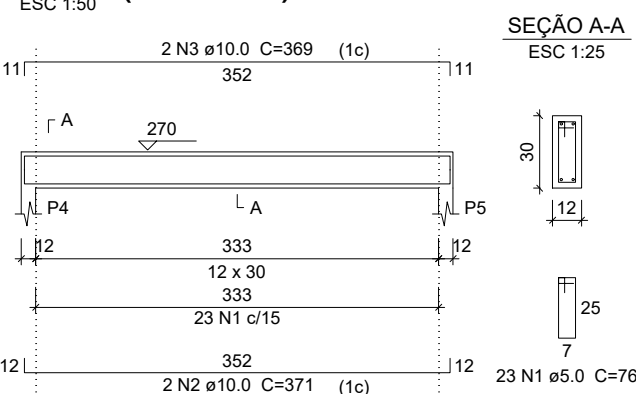
VB2 (12 x 30)



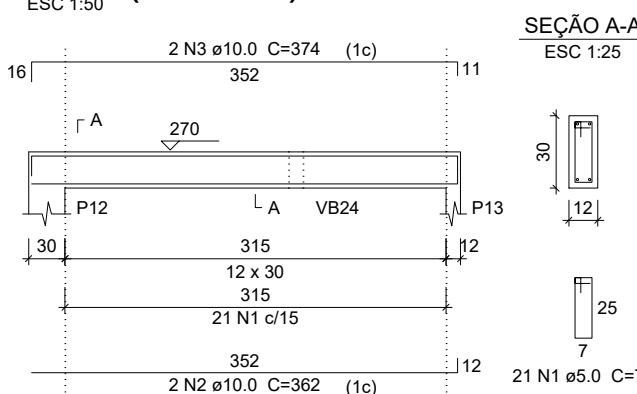
VB3 (12 x 30)



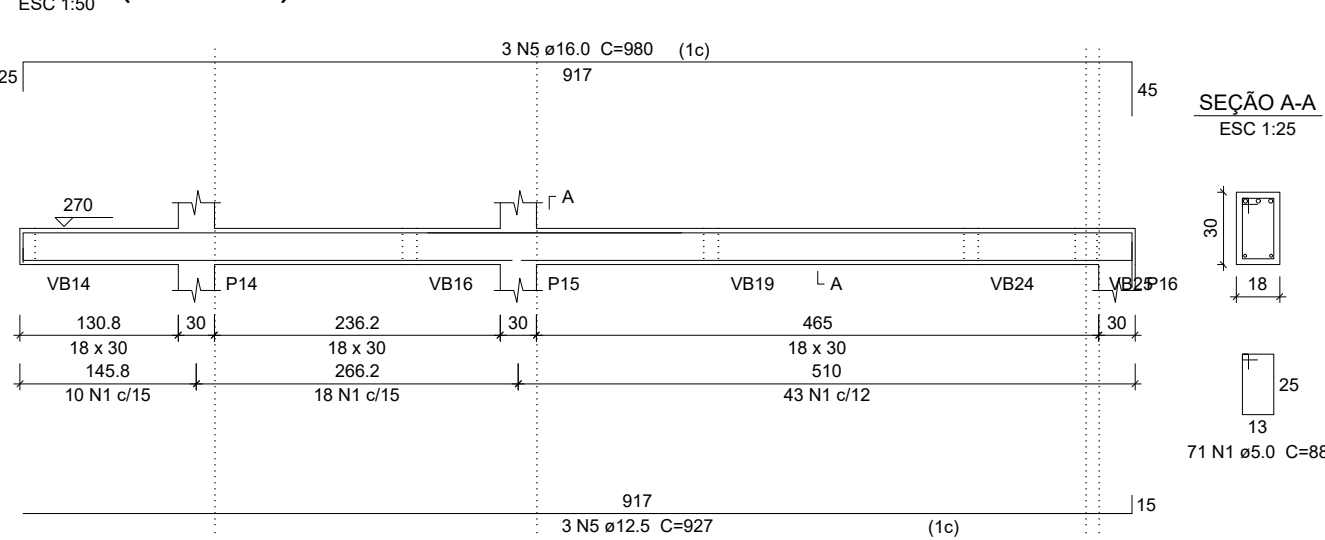
VB4 (12 x 30)



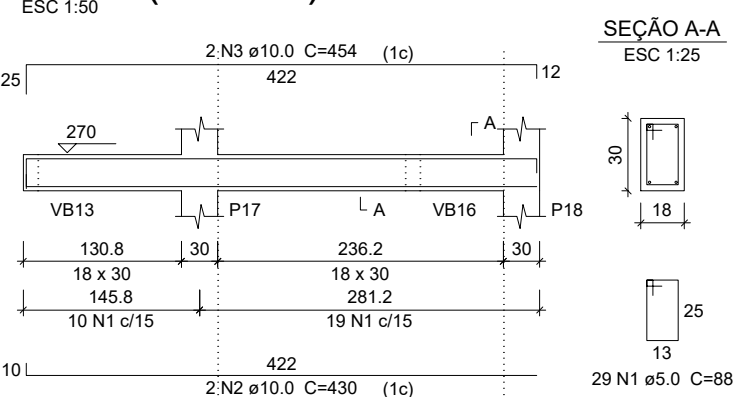
VB7 (12 x 30)



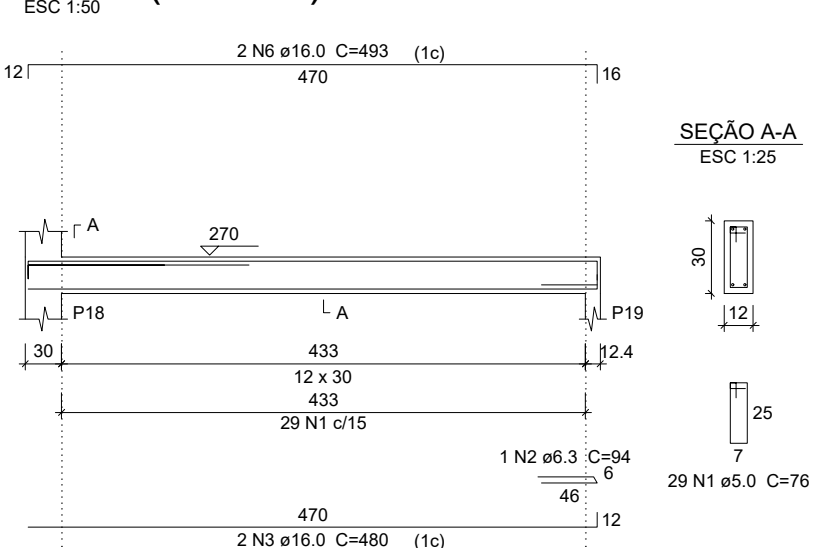
VB8 (18 x 30)



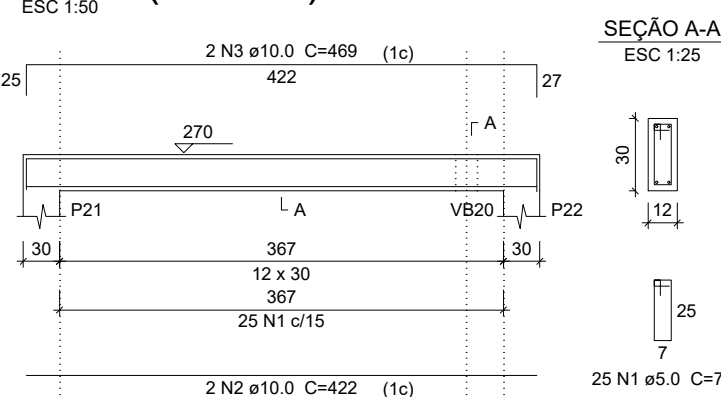
VB10 (18 x 30)



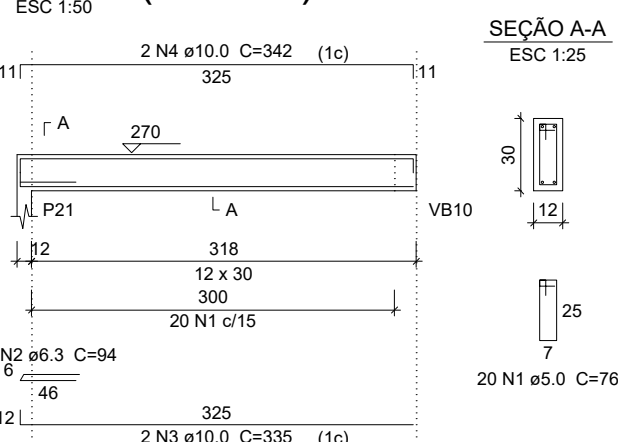
VB11 (12 x 30)



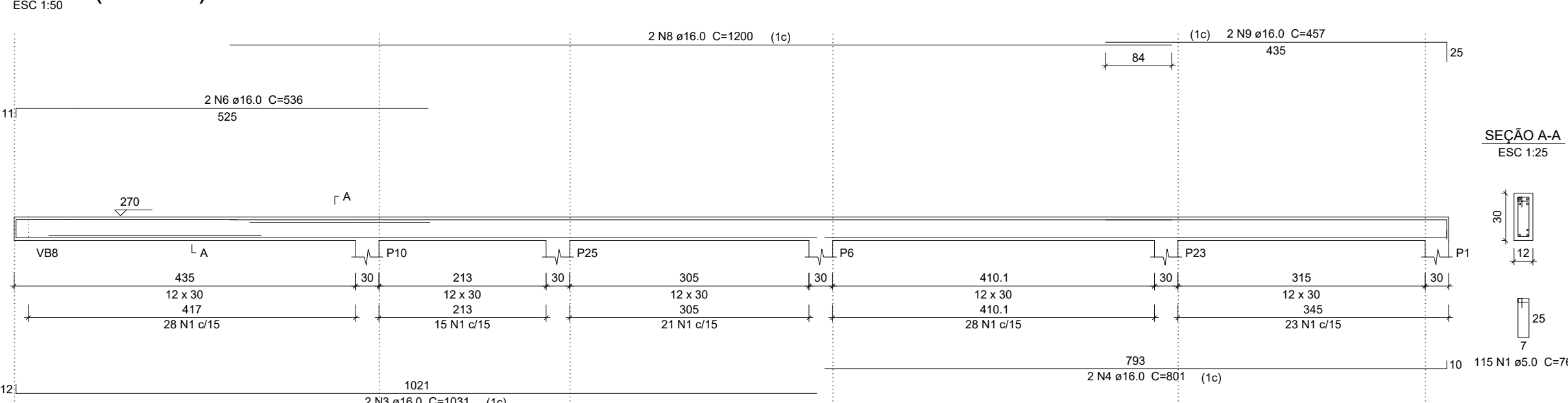
VB12 (12 x 30)



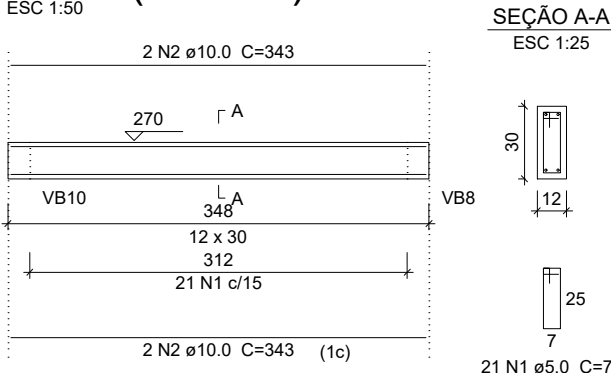
VB13 (12 x 30)



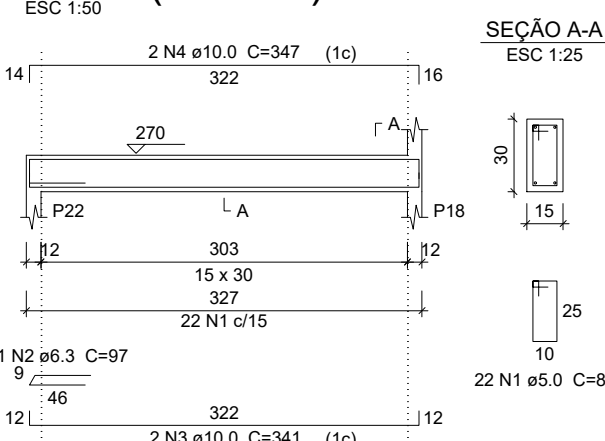
VB14 (12 x 30)



VB16 (12 x 30)



VB17 (15 x 30)



Relação do aço

ELEMENTO	AÇO	N	DIAM	Q	UNIT
VB5	CA60	1	5.0	37	82
	CA50	2	10.0	2	589
	CA50	3	10.0	2	606
VB6	CA60	1	5.0	24	82
	CA50	2	10.0	2	352
	CA50	3	10.0	2	375
VB1	CA60	1	5.0	37	82
	CA50	2	6.3	2	97
	CA50	3	10.0	1	325
VB2	CA50	4	10.0	2	591
	CA50	5	10.0	4	141
	CA50	6	10.0	2	355
VB3	CA60	1	5.0	23	76
	CA50	2	6.3	1	94
	CA50	3	10.0	2	371
VB4	CA50	4	10.0	2	98
	CA50	5	10.0	2	274
	CA60	1	5.0	37	76
VB7	CA50	2	6.3	6	98
	CA50	3	10.0	1	183
	CA50	4	10.0	2	187
VB8	CA50	5	10.0	2	280
	CA50	6	12.5	2	193
	CA50	7	16.0	2	603
VB10	CA60	1	5.0	23	76
	CA50	2	10.0	2	371
	CA50	3	10.0	2	369
VB11	CA60	1	5.0	21	76
	CA50	2	10.0	2	362
	CA50	3	10.0	2	374
VB12	CA60	1	5.0	71	88
	CA50	2	10.0	2	412
	CA50	3	12.5	2	517
VB13	CA50	4	16.0	1	210
	CA50	5	16.0	2	980
	CA60	1	5.0	29	88
VB14	CA50	2	10.0	2	430
	CA50	3	10.0	2	454
	CA60	1	5.0	29	76
VB15	CA50	2	6.3	1	94
	CA50	3	10.0	2	460
	CA50	4	10.0	1	123
VB16	CA50	5	10.0	1	193
	CA50	6	10.0	2	493
	CA60	1	5.0	25	76
VB17	CA50	2	10.0	2	422
	CA50	3	10.0	2	469
	CA60	1	5.0	20	76
VB18	CA50	2	6.3	1	94
	CA50	3	10.0	2	335
	CA50	4	10.0	2	342
VB19	CA60	1	5.0	115	76
	CA50	2	10.0	1	271
	CA50	3	10.0	2	1031
VB20	CA50	4	10.0	2	801
	CA50	5	10.0	2	81
	CA50	6	10.0	2	221
VB21	CA50	7	12.5	2	230
	CA50	8	12.5	2	1200
	CA50	9	12.5	2	457
VB22	CA60	1	5.0	22	76
	CA50	2	10.0	4	356
	CA60	1	5.0	21	76
VB23	CA50	2	10.0	4	343
	CA60	1	5.0	22	82
	CA50	2	6.3	1	97
VB24	CA50	3	10.0	2	341
	CA50	4	10.0	2	347

Resumo do aço

AÇO	DIAM	C.TOTAL	PESO + 10 %
CA50	6.3	11.7	3.1
	10.0	288.9	195.9
	12.5	52	55
CA60	16.0	33.8	58.6
	5.0	441.8	74.9
PESO TOTAL			
CA50	312.8		
CA60	74.9		

Vol. de concreto total (C-30) = 3.5 m³
Área de forma total = 63.17 m²



PREFEITURA MUNICIPAL DE TUCUNDUVA

Secretaria de Obras, Viação e Serviços Urbanos

GESTÃO: 2017-2020

Obra: CRAS

PROPRIETÁRIO: Prefeitura Municipal de Tucunduva

RESP.TÉCNICO: ENG. CIVIL CRISTIAN SCHENDEL / CREA 195387

ÁREA: 213,78m²

ESCALA: 1/125

FRANCHA: 20

REVISÃO: DATA: NOVEMBRO DE 2019
DESENHO: Juliana Bohun

ESTRUTURAL